



**India Meteorological Department
(Ministry of Earth Sciences)**

NATIONAL BULLETIN NO. 17 (BOB/05/2023)

TIME OF ISSUE: 0815 HOURS IST

DATED: 18.11.2023

FROM: INDIA METEOROLOGICAL DEPARTMENT (FAX NO. 24643965/24699216/24623220)

TO: CONTROL ROOM, NDM, MINISTRY OF HOME AFFAIRS (FAX.NO. 23093750)

CONTROL ROOM NDMA (FAX.NO. 26701729)

CABINET SECRETARIAT (FAX.NO.23012284, 23018638)

PS TO HON'BLE MINISTER FOR S & T AND EARTH SCIENCES (FAX NO.23316745)

SECRETARY, MOES (FAX NO. 24629777)

H.Q. (INTEGRATED DEFENCE STAFF AND CDS) (FAX NO. 23005137/23005147)

DIRECTOR GENERAL, DOORDARSHAN (23385843)

DIRECTOR GENERAL, AIR (23421105, 23421219)

PIB MOES (FAX NO. 23389042)

UNI (FAX NO. 23355841)

D.G. NATIONAL DISASTER RESPONSE FORCE (NDRF) (FAX NO. 26105912, 2436 3260)

DIRECTOR, PUNCTUALITY, INDIAN RAILWAYS (FAX NO. 23388503)

CHIEF SECRETARY, ODISHA (FAX NO. 0674-2536660)

CHIEF SECRETARY, WEST BENGAL (FAX NO. 033-22144328)

CHIEF SECRETARY, ANDHRA PRADESH (FAX NO. 0863-2441029, 08645-246600)

CHIEF SECRETARY, TAMIL NADU (FAX NO 044-25672304)

CHIEF SECRETARY, PUDUCHERRY (FAX NO 0413-2334145)

ADMINISTRATOR, ANDAMAN & NICOBAR ISLANDS (FAX NO. 03192- 232656)

CHIEF SECRETARY, GOVT. OF TRIPURA (FAX NO. 0381-2414013, 2413200)

CHIEF SECRETARY, GOVT. OF MIZORAM (FAX NO. 0389-2322745, 2320588)

CHIEF SECRETARY, GOVT. OF MANIPUR (FAX NO. 0385-2452629)

CHIEF SECRETARY, GOVT. OF NAGALAND (FAX NO. 0370-2270057)

CHIEF SECRETARY, GOVT. OF ASSAM (FAX NO. 0361-2260900)

CHIEF SECRETARY, GOVT. OF MEGHALAYA (FAX NO. 0364-2225978)

Sub: Deep Depression (remnant of Cyclonic Storm “Midhili”) weakened into a Depression over Tripura and adjoining Bangladesh & Mizoram

The Deep Depression (remnant of Cyclonic Storm “Midhili”) over Tripura & adjoining Bangladesh moved northeastwards with a speed of 10 kmph during past 6 hours, weakened into a Depression and lay centered at 0530 hours IST of 18th November over Tripura and adjoining Bangladesh & Mizoram near latitude 23.7°N and longitude 91.7°E, about 50 km east-southeast of Agartala and 160 km southwest of Silchar.

It is likely to move northeastwards and weaken into a Well Marked Low Pressure Area over south Assam & adjoining Mizoram-Tripura during next 06 hours.

Warnings:

(i) Rainfall Warning (graphics enclosed):

- Light to moderate rainfall at most places is likely over Nagaland, Manipur, east Assam and east Arunachal Pradesh on 18th November.
- Light to moderate rainfall at many places is likely Mizoram, Tripura and Meghalaya till 18th November morning.

(ii) Wind warning (graphics enclosed):

- **Northeast Bay of Bengal and along & off Bangladesh coast: Squally wind** speed reaching **35-45 kmph gusting to 55 kmph** is likely to prevail till noon of 18th November and would decrease thereafter.
- **Strong wind** speed reaching **35-45 kmph gusting to 55 kmph** is likely over Tripura, Mizoram, Manipur and south Assam till 18th November evening.

(iii) Sea Condition:

- **Very rough** sea condition is likely to prevail over Northeast Bay of Bengal and along & off Bangladesh coast till noon of 18th November and improve thereafter.

(iv) Fishermen Warning:

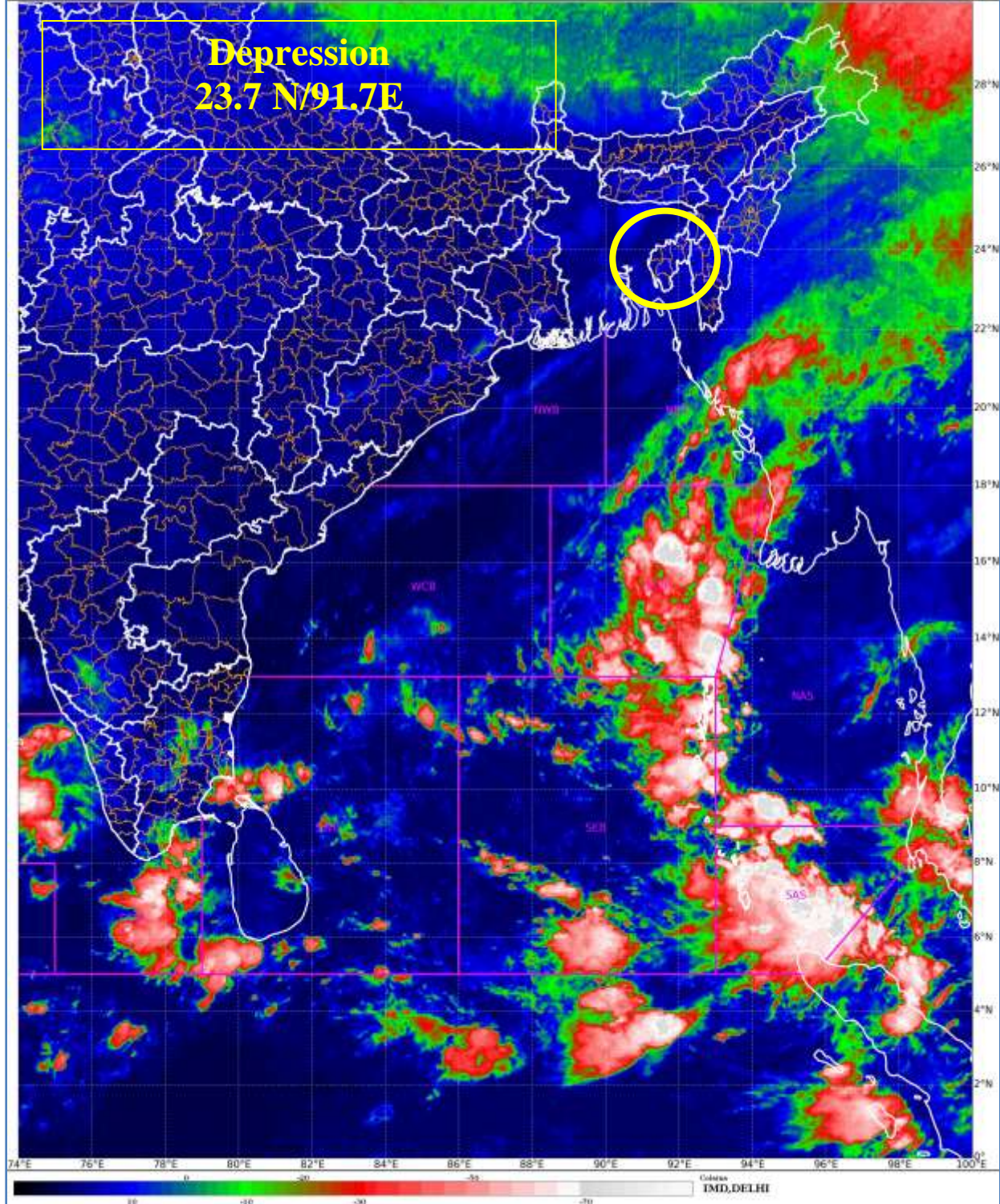
Fishermen are advised not to venture into

- Northeast Bay of Bengal and along & off Bangladesh during next 6 hours.

The system is under continuous surveillance and the next message will be issued at 1130 hours IST of today the 18th November, 2023.

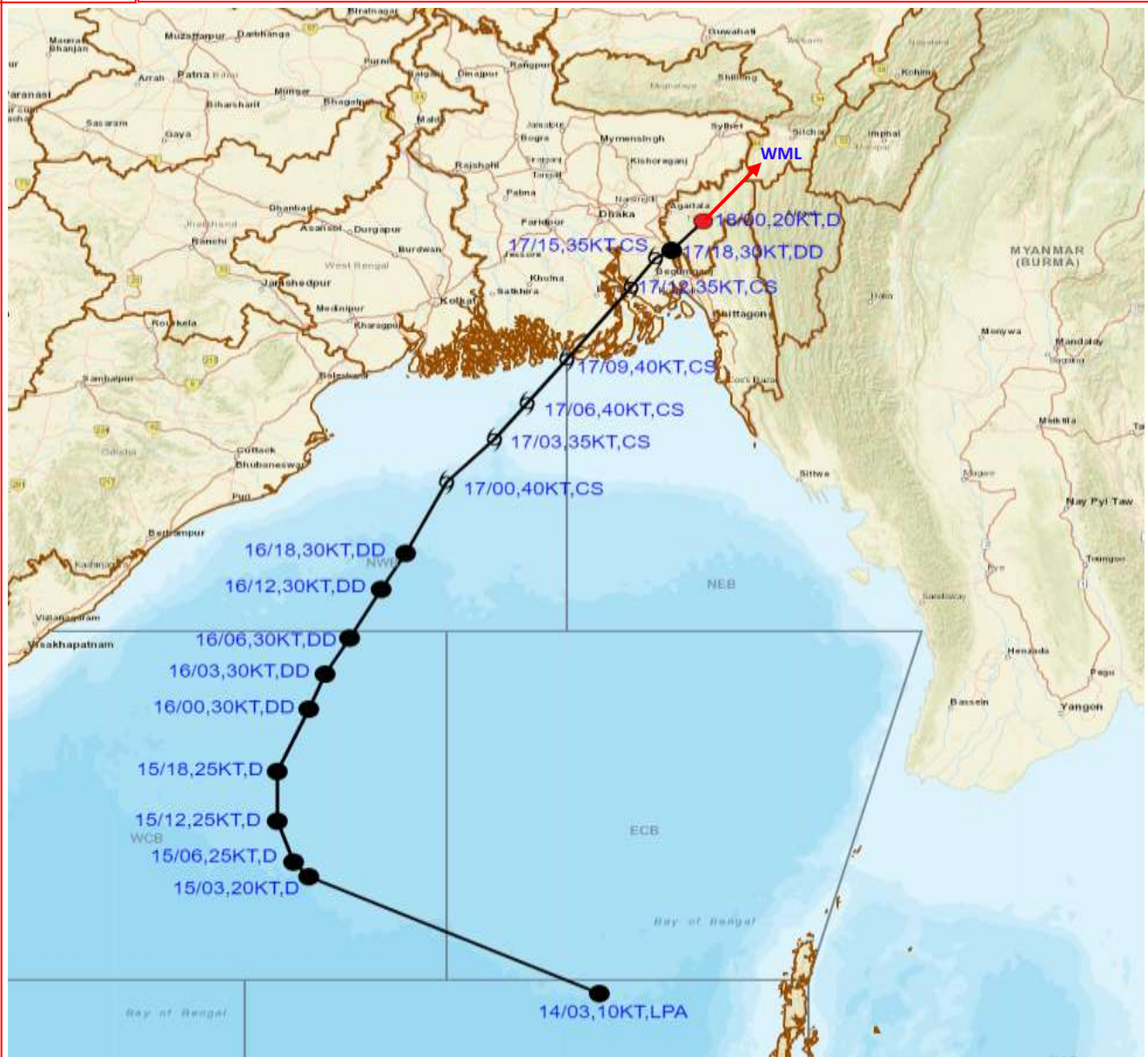
(Shobhit Katiyar)
Scientist D, Cyclone Warning, New Delhi

Copy to: ACWC Chennai/ ACWC Kolkata/CWC Bhubaneswar/CWC Vishakhapatnam/MC Amravati/ RMC Guwahati/MC Agartala/MC Mizoram/MC Manipur/MC Nagaland/MC Shillong





OBSERVED AND FORECAST TRACK AND INTENSITY IN ASSOCIATION WITH DEPRESSION (REMNANT OF CYCLONIC STORM "MIDHILI") OVER TRIPURA AND ADJOINING BANGLADESH & MIZORAM BASED ON 0000 UTC (0530 HRS IST) OF 18TH NOVEMBER 2023.



DATE/TIME IN UTC
IST=UTC + 0530

L: LOW PRESSURE AREA

WML: WELL MARKED LOW PRESSURE AREA

D: DEPRESSION (17-27 KT)

DD: DEEP DEPRESSION (28-33 KT)

CS: CYCLONIC STORM (34-47 KT)

SCS: SEVERE CYCLONIC STORM (48-63 KT)

VSCS: VERY SEVERE CYCLONIC STORM (64-89 KT)

ESCS: EXTREMELY SEVERE CYCLONIC STORM (90-119 KT)

SuCS: SUPER CYCLONIC STORM (≥ 120 KT)

● LESS THAN 34 KT

○ 34-47 KT

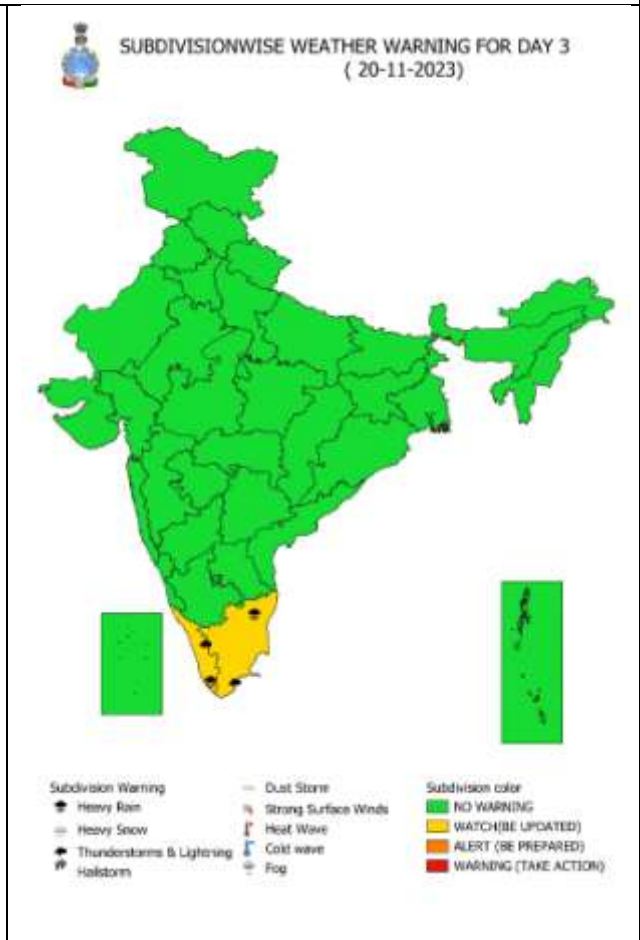
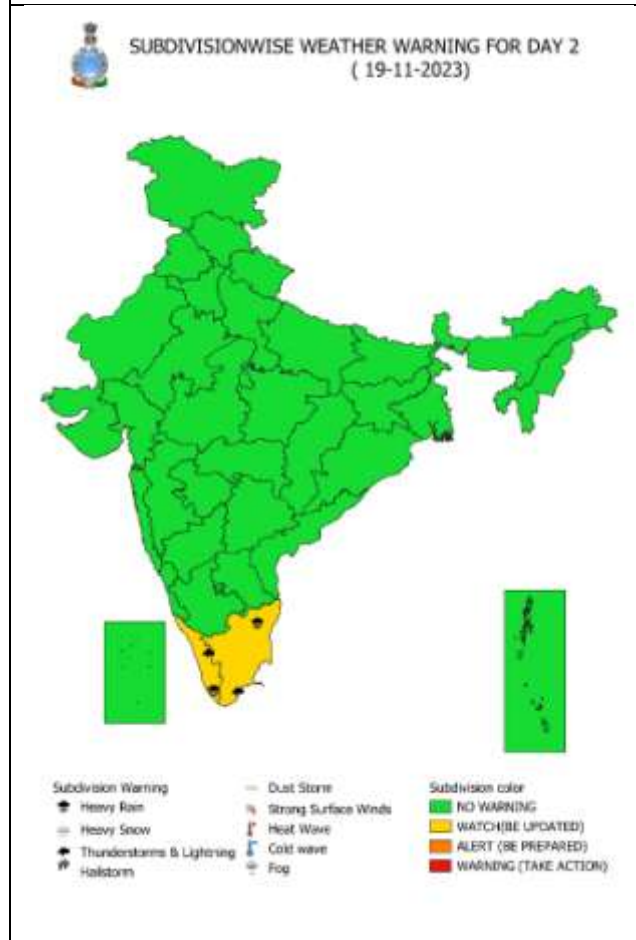
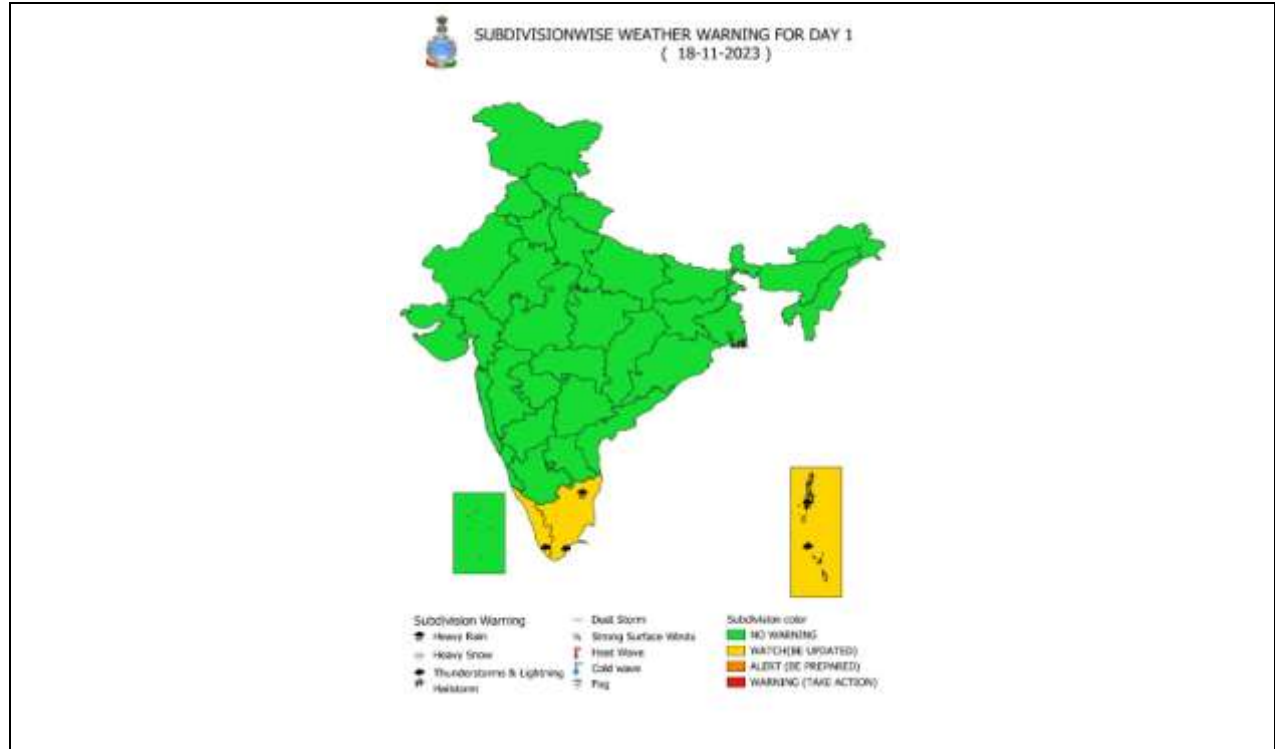
⊕ ≥ 48 KT

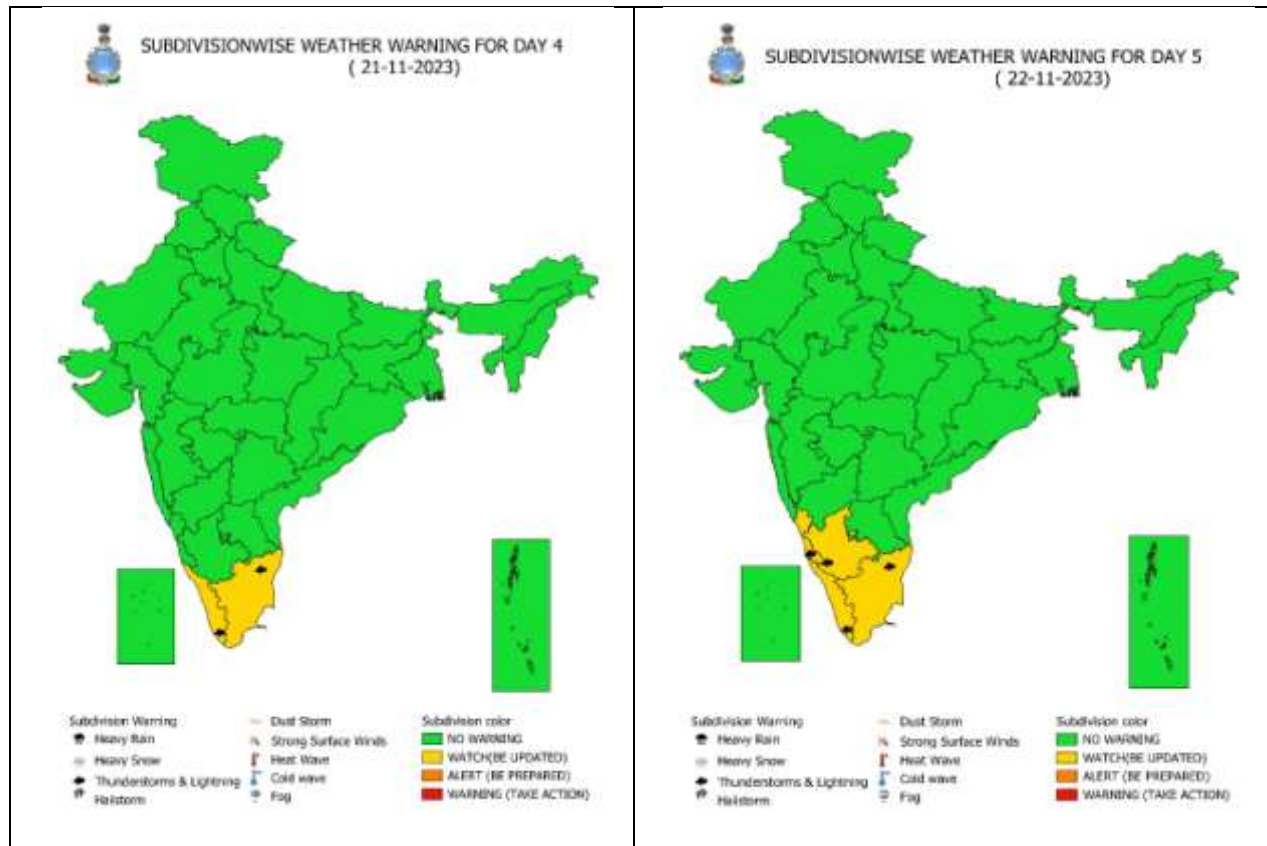
— OBSERVED TRACK

— FORECAST TRACK

▲ CONE OF UNCERTAINTY

WEATHER WARNING GRAPHICS





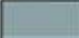
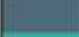


- Heavy Rain
- Strong Winds
- Frost
- Heavy Snow
- Visibility
- Cold Wave
- Thunderstorm
- Cyclone
- Heat Wave
- Dust Storm
- Squall/ Hail
- Sea State

WARNING

WARNING (TAKE ACTION)
ALERT (BE PREPARED)
WATCH (BE UPDATED)
NO WARNING (NO ACTION)

Fishermen warning graphics



	Squally WX with wind speed 40-45 kmph gusting to 55 kmph
	Squally WX with wind speed 45-55 kmph gusting to 65 kmph
	Squally wind with speed 50-60 kmph gusting to 70 kmph
	CS with Gale wind speed 60-90 kmph gusting to 110 kmph

Fishermen are advised not to venture into the marked areas.